

MDT Solution Proposal



Update IP-Router, IP-Interface and VisuControl Easy

Possible applications:

The firmware of the devices can directly be changed at the respective device

Used devices:

MDT IP Router

SCN-IP100.02 / SCN-IP100.03

MDT IP Interface

SCN-IP000.02 / SCN-IP000.03

MDT VisuControl Easy

VC-EASY.02

Content

General Information	2
Update IP-Router, IP-Interface and VC Easy.....	3

General Information

IP Interface/Router, Series .02:

An update in the event of a sudden increase over several firmware versions, for example from version V1.08 to V1.015, may cause an error in the device. The device can then no longer be loaded with its own application and physical address!

Solution: Update/Downgrade to V1.03 -> then update to the latest firmware.

Important: In this case please contact the MDT support at support@mdt.de !

Link to the firmware files (databases for discontinued products):

https://www.mdt.de/EN_Downloads_Productdata_Archive.html

MDT IP Interface Firmwareupdate	.02
MDT IP Router Firmwareupdate	.02

IP Interface/Router, Series .03:

Link to the firmware files (Current devices):

https://www.mdt.de/EN_Downloads_Productdata.html

MDT IP Interface Firmwareupdate	.03
MDT IP Router Firmwareupdate	.03

VisuControl Easy, Series .02:

Link to the firmware files (Current devices):

https://www.mdt.de/EN_Downloads_Productdata.html

MDT VisuControl Easy object server Firmwareupdate	.02
--	-----

Important for all devices:

After an update, the device is reset to factory settings. The physical address and application must be reloaded!

Also, all settings in the web browser such as e-mail addresses etc. are reset to default settings. Therefore, make a note of the entered addresses etc. in advance.

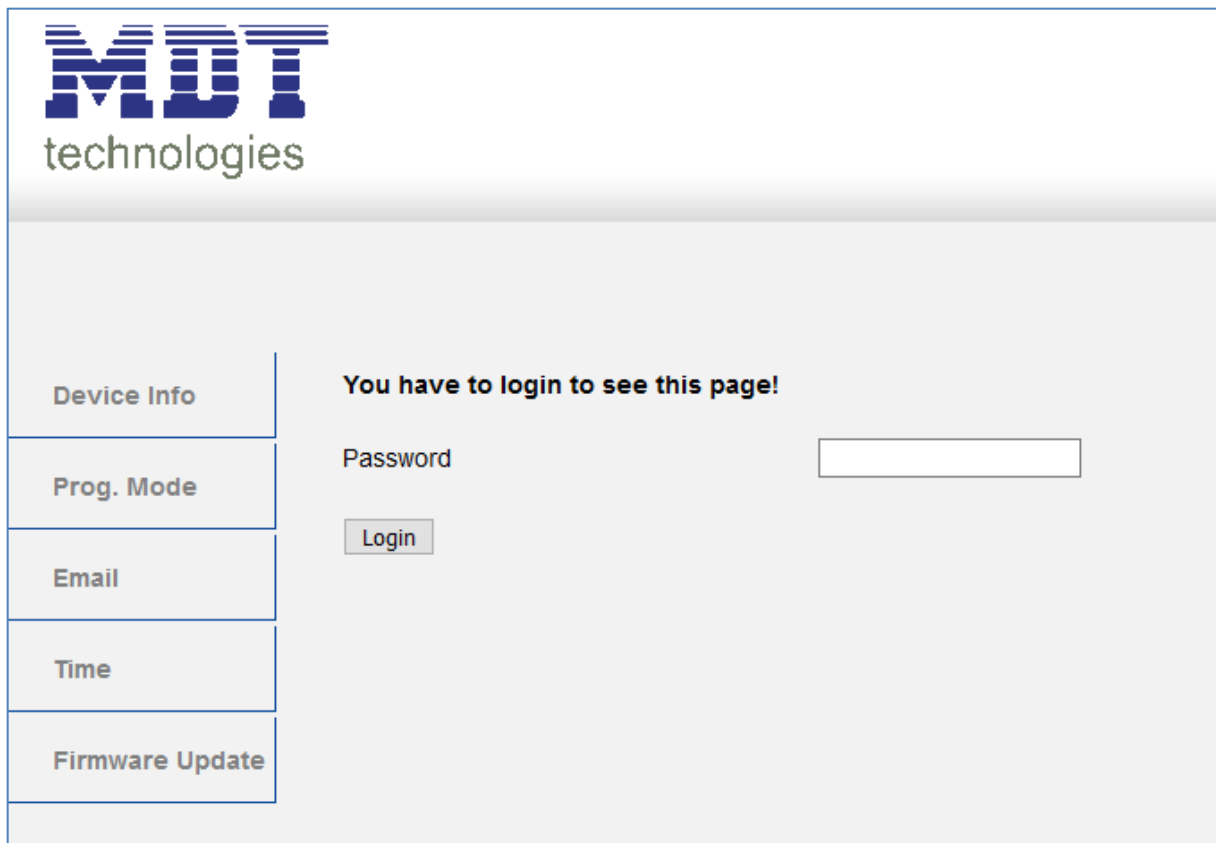
Update IP-Router, IP-Interface and VC Easy

These examples explain how to update the IP Router, the IP Interface or the VC Easy.

For an update the following procedure is recommended:

1. The web interface has to be opened in the browser.
To do this, enter the IP address of the device with the port in the address line of the browser.

e.g.: http://192.168.1.234:8080 for the IP address 192.168.1.234 and the http port 8080
2. The first thing that appears is a web page with a password request. The password field remains empty if the second application has not yet been loaded.
If the second application has been installed the default password is **admin**.

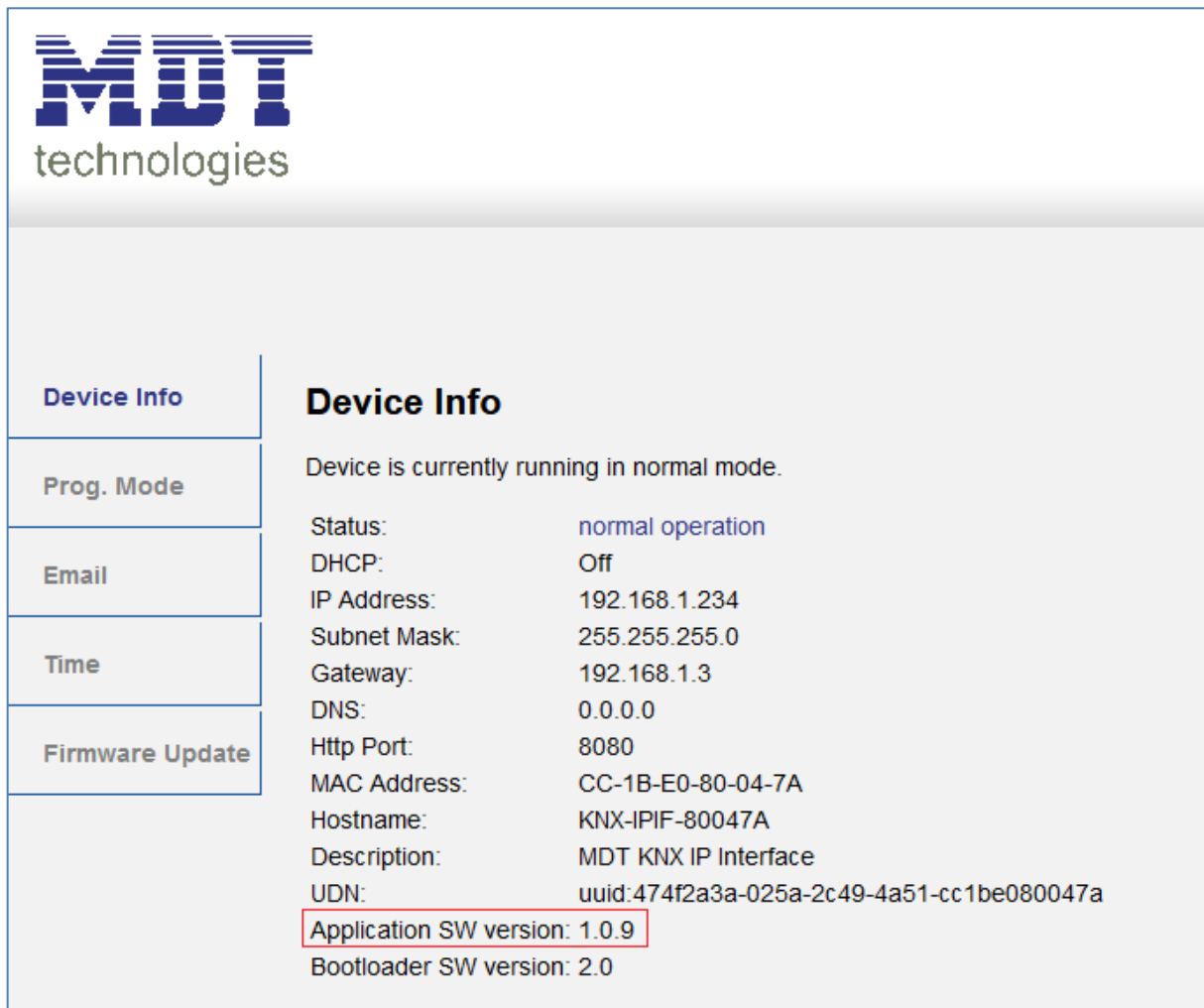


Info: It can happen that the web access is blocked.

Interface locked

This can be caused by the "Secure" function or settings in the second application. Here, the web interface has to be enabled in the parameters or the device has to be restarted, depending on the parameter settings.

3. The current SW version can be viewed in the "Device Info":



The screenshot shows the MDT technologies logo at the top left. Below it is a navigation menu with buttons for "Device Info", "Prog. Mode", "Email", "Time", and "Firmware Update". The "Device Info" button is selected. The main content area is titled "Device Info" and contains the following text:

Device is currently running in normal mode.

Status: normal operation

DHCP: Off

IP Address: 192.168.1.234

Subnet Mask: 255.255.255.0

Gateway: 192.168.1.3

DNS: 0.0.0.0

Http Port: 8080

MAC Address: CC-1B-E0-80-04-7A

Hostname: KNX-IPIF-80047A

Description: MDT KNX IP Interface

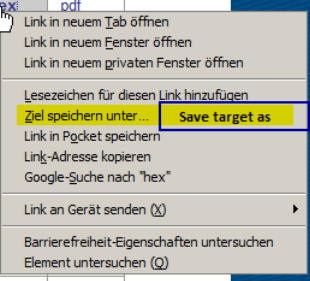
UDN: uuid:474f2a3a-025a-2c49-4a51-cc1be080047a

Application SW version: 1.0.9

Bootloader SW version: 2.0

4. Now you can check on the MDT homepage under Downloads if an update is available. If an update is available, you can click on the hex-file with the right mouse button and save it to a desired location:

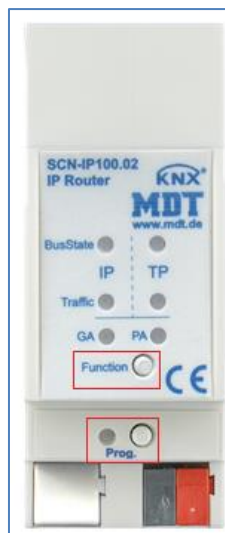
Product data System Devices:	Series	Info	Version	ETS 3	ETS 4	ETS 5	History
MDT Line Coupler	.01		V1.1	vd4	prod	prod	--
MDT Line Coupler	.02		V3.0	--	prod	prod	--
MDT IP Interface	.01		V1.0	vd2	prod	prod	--
MDT IP Interface/IP Router	.02		V1.1b	--	prod	prod	pdf
MDT IP Interface/IP Router with email function	.02		V1.0c	--	prod	prod	pdf
MDT IP Interface Firmwareupdate	.02		V1.015	--	hex	hex	pdf
MDT IP Router Firmwareupdate	.02		V1.015	--	hex	hex	pdf
MDT Logical Module	.01		V1.1	vd4	prod	prod	--
Product data Controllers/Sensors:	Series	Info	Version	ETS 3	ETS 4	ETS 5	History
MDT Room Temperature Controller 1-fold	.01		V1.4	vd4	prod	prod	--
Product data Weather Sensors:	Series	Info	Version	ETS 3	ETS 4	ETS 5	History
MDT Sun Sensor	.01		V1.1	vd4	prod	prod	--
Product data Presence Detectors:	Series	Info	Version	ETS 3	ETS 4	ETS 5	History
MDT Presence Detector old series PM360			V2.3	vd4	prod	prod	--
MDT Presence Detector series P360	.01		V2.4	vd4	prod	prod	--
MDT Presence Detector 3/4 sensors	.02		V3.4	--	prod	prod	--
MDT Motion Detector/Automatik Switch	.01		V3.4	--	prod	prod	--



A context menu is shown over a link in the table. The menu options include: "Link in neuem Tab öffnen", "Link in neuem Fenster öffnen", "Link in neuem privaten Fenster öffnen", "Lesezeichen für diesen Link hinzufügen", "Ziel speichern unter...", "Save target as", "Link in Pggket speichern", "Link-Adresse kopieren", "Google-Suche nach 'hex'", "Link an Gerät senden (X)", and "Barrierefreiheit-Eigenschaften untersuchen Element untersuchen (Q)".

5. The update can be started from "Firmware Update" in the web interface. To enter the update mode, briefly press the programming key and the function key one after the other and then press the "refresh" button:

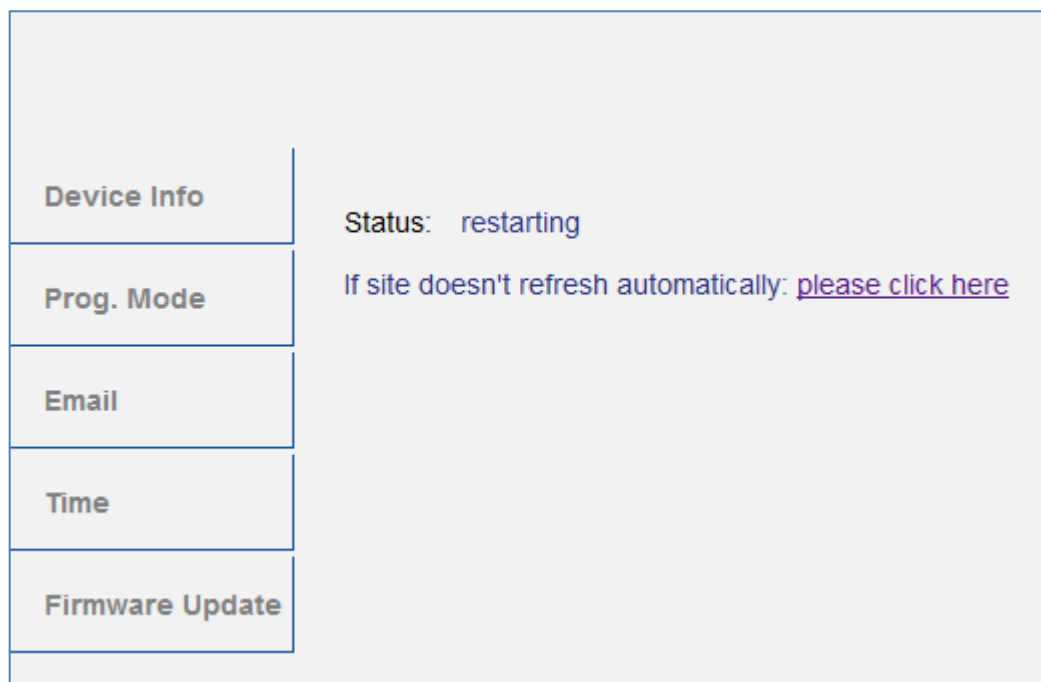
To begin the update procedure an authorization is required. Set program mode active and after that give a short key press to the function button.	
Device Info	Program Mode
Prog. Mode	Function Button
Email	Status: normal operation
Time	<input type="button" value="refresh"/>
Firmware Update	



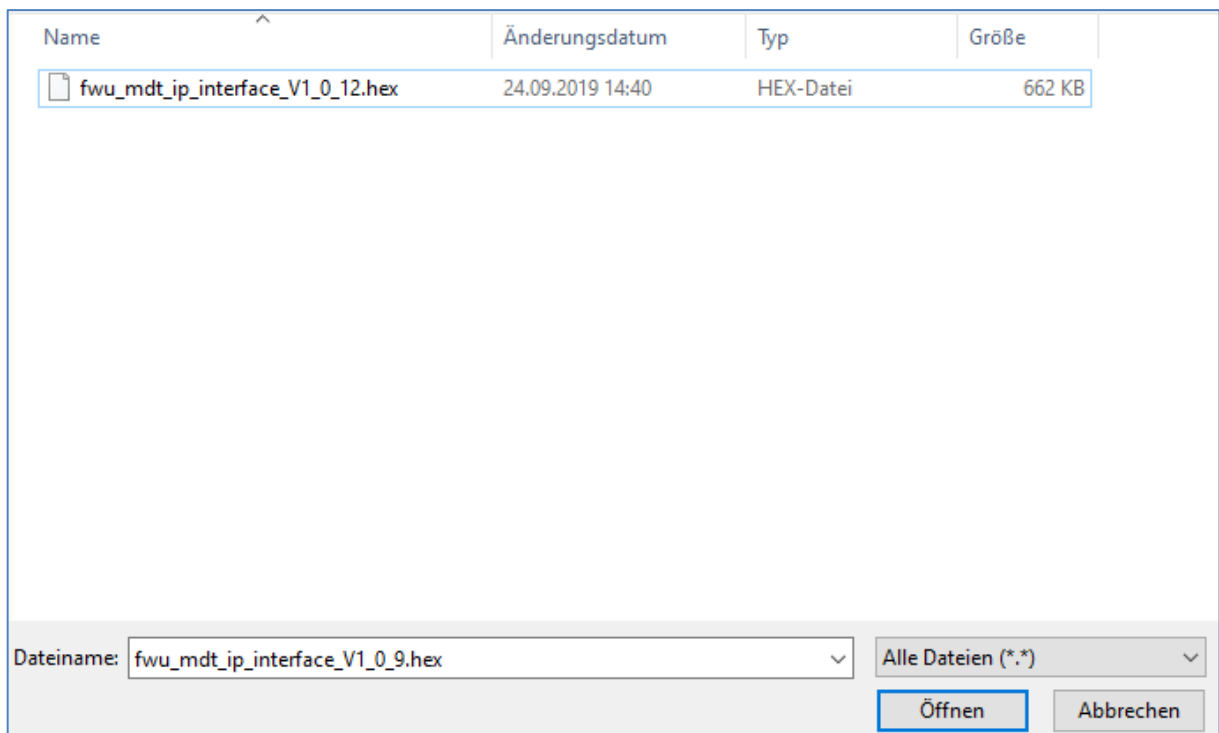
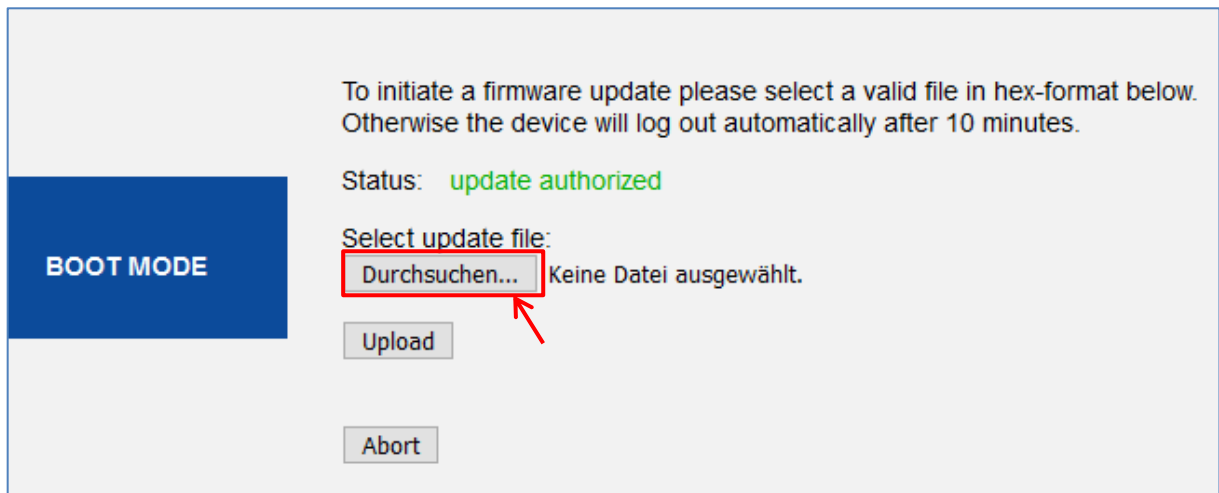
6. To enter the "BOOT MODE" press the "request update" button:

Device Info	Requesting an update sets the device to boot mode and suspends KNX-IP communication. Otherwise the device will log out automatically after 10 minutes. Device Mode: update authorized Timeout: 9 min Please press button below to continue. <input type="button" value="request update"/>
Prog. Mode	
Email	
Time	
Firmware Update	

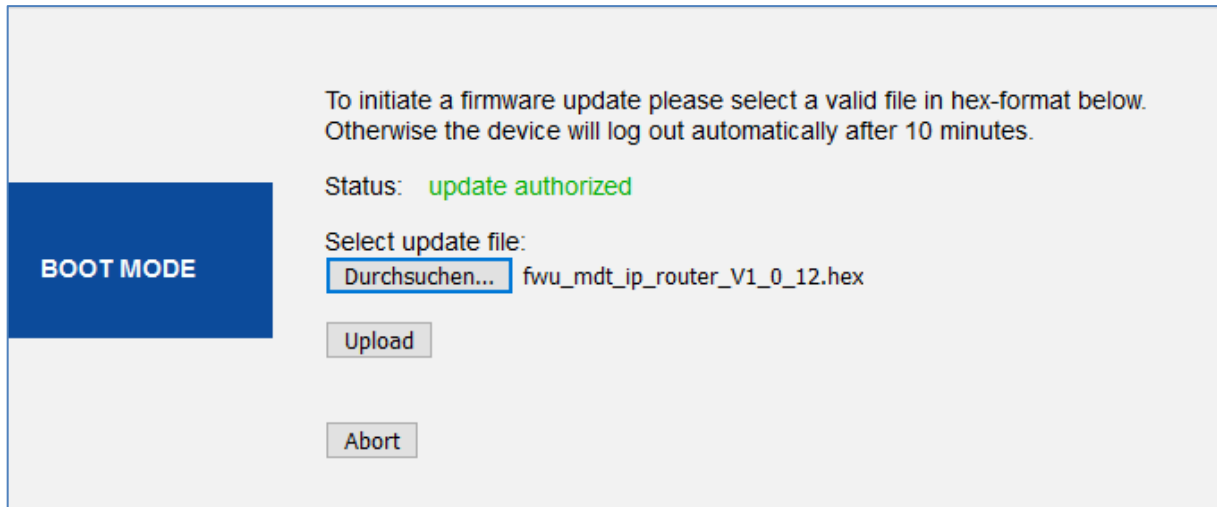
7. If you are not automatically forwarded please click on the "**please click here**" button:



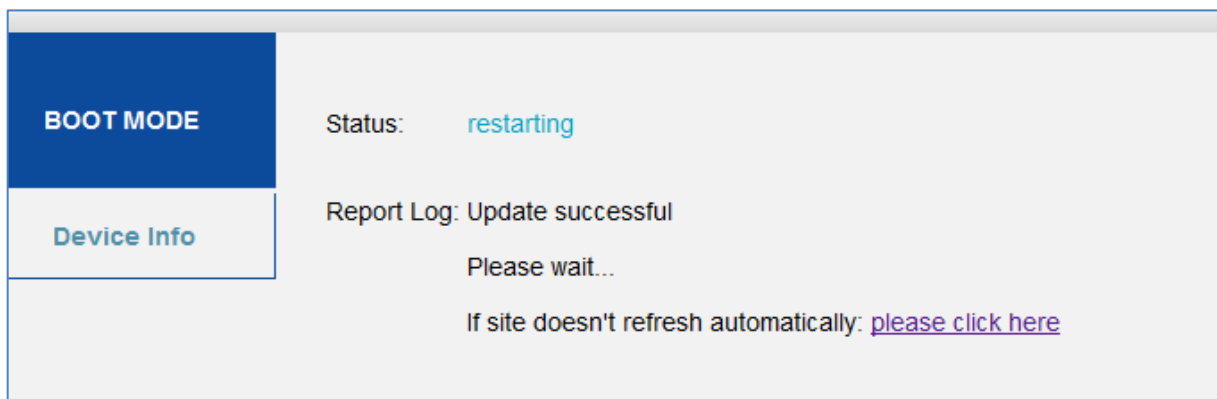
8. In "BOOT MODE", press the "Browse..." button to select the new firmware:



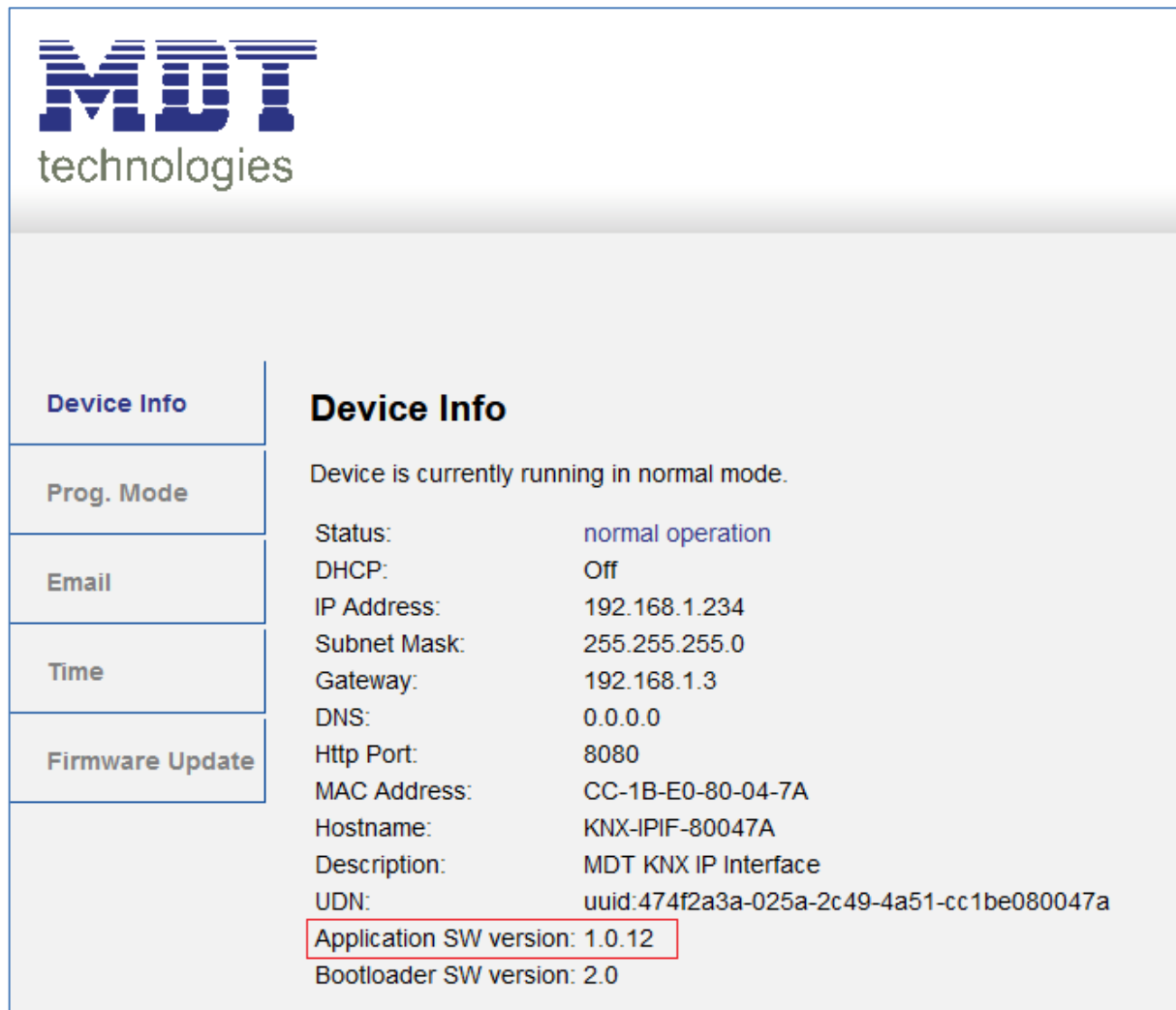
9. When the file is selected press the "Upload" button to start the update. The progress of the update is shown by loading the browser:



10. After a successful update, the browser will automatically reload.
If this does not happen automatically, please press the "please click here" button:



11. After successful update, the new firmware version is displayed under "Device Info":



The screenshot shows the MDT technologies web interface. At the top left is the MDT technologies logo. Below it is a navigation menu with the following items: Device Info (highlighted), Prog. Mode, Email, Time, and Firmware Update. The main content area is titled "Device Info" and contains the following text:

Device is currently running in normal mode.

Status:	normal operation
DHCP:	Off
IP Address:	192.168.1.234
Subnet Mask:	255.255.255.0
Gateway:	192.168.1.3
DNS:	0.0.0.0
Http Port:	8080
MAC Address:	CC-1B-E0-80-04-7A
Hostname:	KNX-IPIF-80047A
Description:	MDT KNX IP Interface
UDN:	uuid:474f2a3a-025a-2c49-4a51-cc1be080047a
Application SW version:	1.0.12
Bootloader SW version:	2.0